

### Ceramic Peening Beads

Ceramic shot is white, spherical shot blasting media, primarily composed of zirconia and silica. This product is mainly used for surface strengthening of large components and is often utilized in the aerospace industry.

- The uniform shape ensures consistent and standardized operation.
- High hardness easily removes all kinds of surface dirt and deposits.
- Long service life can reduce operating costs.
- High toughness remains stable after hundreds of blasting cycles.
- Certified with ISO9001:2008 and ISO14001 standards

#### CHEMICAL ANALYSIS

Typical values	ZrO <sub>2</sub>	Al <sub>2</sub> O <sub>3</sub>	SiO <sub>2</sub>
%	60-70	<10	28-33

#### DESIGNATION AND AVAILABLE SIZES

Name	mm	Name	mm	Name	mm
Z100	0.100-0.150	Z150	0.150-0.210	Z210	0.250-0.425
Z300	0.300-0.425	Z425	0.425-0.600	Z600	0.600-0.850
Z850	0.850-1.180				

#### PHYSICAL PROPERTIES

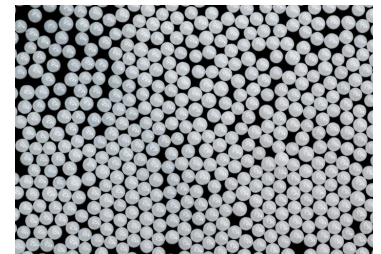
	Numerical Value
Mohs Hardness	7
Grain Shape	Sphere
Particle Color	White
Density	3.8g/cm <sup>3</sup>
Bulk Density	2.2g/cm <sup>3</sup>
Vickers Hardness	643-780HV

#### PACKAGING

- 25 kg plastic jerrycan, 1-ton bulk bag
- Big-bags available upon request

#### MAIN APPLICATIONS

- Automotive parts surface pretreatment
- Glass and ceramic surface decoration
- Remove impurities from building materials
- Remove old paint and rust from industrial equipment



**JiangSu Henglihong Industrial Co., Ltd.**  
 Shuofang Industrial Park, Xinwu District,  
 Wuxi City, Jiangsu Province  
 contact@hlh-js.com  
 Phone : +86 180-6835-1533  
[www.hlh-js.com](http://www.hlh-js.com)